

UNMEBRA

---

# UMBRA

This brand guideline defines the core elements of Umbra's updated visual identity and provides clear instructions for using them consistently. From logo usage and color palette to typography, imagery, and iconography, the guide is designed to help internal teams and external partners apply the brand cohesively across all touchpoints. It also includes practical templates and examples to ensure the system scales seamlessly across formats and communications.



# Content

## Umbra DNA

01	Mission	
	Mission	7
	Mission — Expanded	8
02	Vision	
	Vision	10
	Vision — Expanded	11
	What It Means	12
03	Tagline	
	Tagline	14
04	Values	
	Values	16

05	Brand	
	Brand	18
	Concept	19
	Brand Background	20
	Brand Ethos	21
	Brand Tone: Umbra as Da Vinci	22
06	About	
	About	24
	About — Expanded	25
07	Why Umbra	
	Why Umbra	27
08	One-Liners	
	One-Liners	29

09	Business Messaging	
	Remote Sensing: The Data	37
	About Remote Sensing	38
	Why Umbra SAR Data	39
	One-Liners	40
	Brand Ethos	41
	Space Systems: The Components	42
	About Space Systems	43
	Why Umbra Hardware	45
	One-Liners	46
	Brand Ethos	47
	Mission Solutions: The Platforms	48
	About Mission Solutions	49
	Why Umbra Mission Solutions	50
	One-Liners	51
	Brand Ethos	52

Content

Visual Identity

10	Heart of the Brand	
	Heart of the Brand	54
11	Our Logo	
	Primary Logo	57
	Logo Colors and Usage	60
	Alignment	61
	Clear Space	62
	Logo Misuse	63
	Minimum Size	64

12	Our Colors	
	Brand Colors	66
	Primary Color	67
	Secondary Colors	68
	Accent Colors	69
	Color Pairings	70
13	Our Fonts	
	Typeface Breakdown	72
	Primary Typeface — Aeonik	73
	Secondary Typeface — Space Mono	74
	Secondary Typeface — Arial	75

14	Our Photos	
	SAR Imagery	77
	Satellite Photography	78
	Component Photography	79

Applications

15	Presentation Slides	
	Sample Slide	82
16	Digital	
	Signature Block	93
17	Print	
	Business Card	95
	Letterhead	96
	Press Release	97
	Internal Memo	98
	Policy Document	99

Disclosures

18	Disclosures	
	Umbra Public	101
	Umbra Confidential	102
	Umbra Restricted   Proprietary	103
	Umbra Restricted   Proprietary   Export Controlled	104

At the core of our brand lies the Umbra DNA — the essential elements that define our identity, character, and presence.

Here, we unpack the fundamental aspects that set us apart, ensuring our brand remains distinct and consistent across all touchpoints.

01	Our Brand
02	Mission, Vision, Values
03	About Umbra
04	Business Specific Messaging

# Umbra DNA

# Mission



# Redefine Space

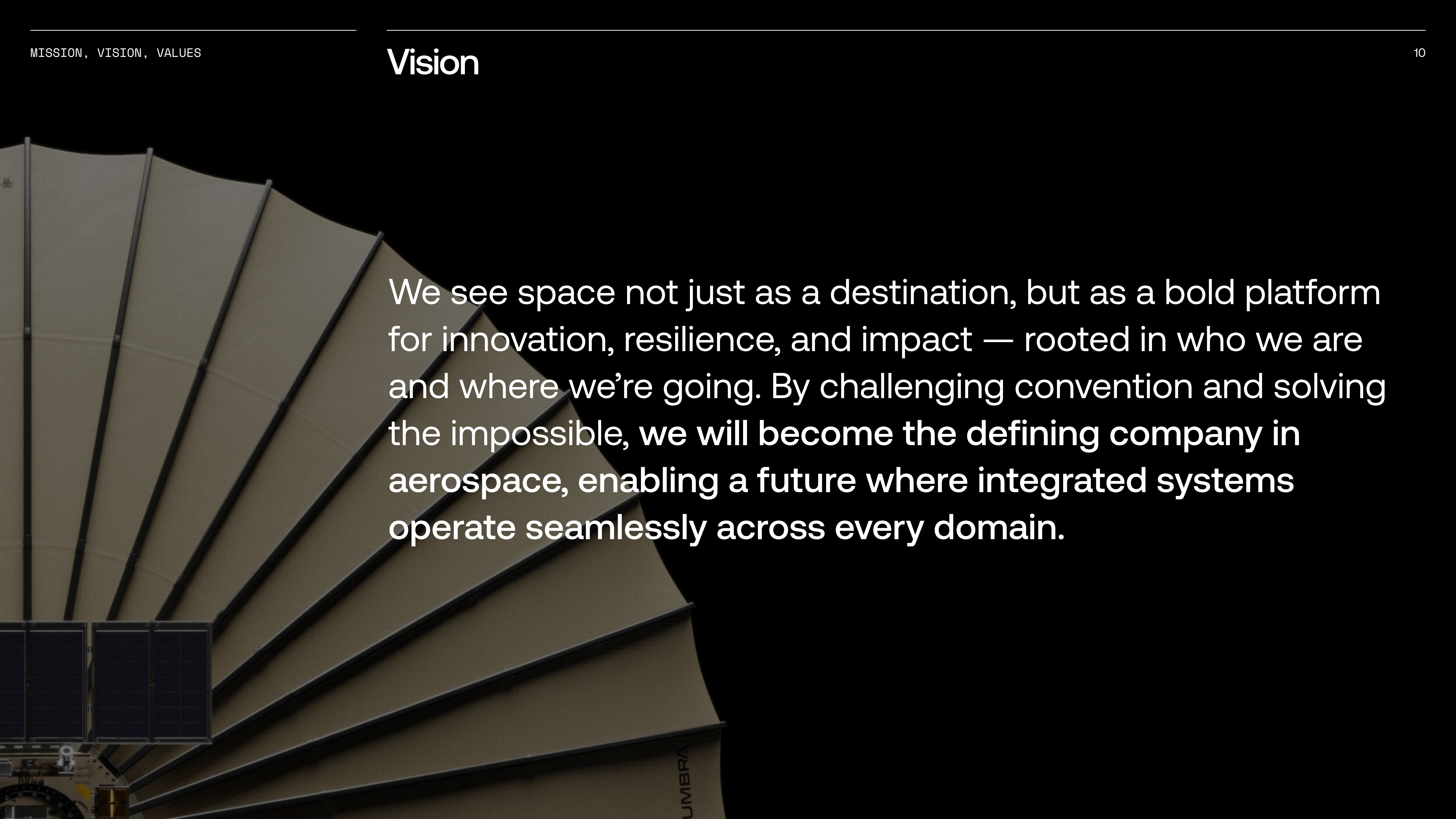


# Mission Expanded

We redefine space — for people, systems,  
and missions in every domain.



# Vision

The background of the slide features a large, fan-like structure made of multiple light-colored, curved panels radiating from a central point. In the bottom left corner, a portion of a satellite is visible, showing its solar panel arrays and structural components. The text is overlaid on the right side of the image.

We see space not just as a destination, but as a bold platform for innovation, resilience, and impact — rooted in who we are and where we're going. By challenging convention and solving the impossible, we will become the defining company in aerospace, enabling a future where integrated systems operate seamlessly across every domain.



# Vision — Expanded

At Umbra, we believe space has always represented more than what's above us — it's all around us. It is expansive and bold. It challenges us to look outward, break boundaries, and reimagine the limits of what we can achieve.

Redefining space isn't just a vision — it's how we operate. We didn't follow convention. We built differently — solving what others called impossible.

That same mindset now drives what comes next.

We are engineering systems that reflect this belief: powered by space and grounded in purpose, that move intelligence at the speed of relevance and deliver clarity and connection to the world's most critical missions. Our systems of satellites, sensors, software, and services will rival the most capable.

They will be independent, integrated, and interoperable. Designed to fill critical gaps, respond to evolving threats, and solve problems that don't yet have names. Systems that arrive before they're asked. That focus where it matters. That deliver when others can't.

**Systems that empower missions from orbit to ocean, and everywhere in between.**

This is our purpose — to explore everything, solve anything, and compromise nothing — and in doing so, redefine what space can be.

# What It Means

## Challenge the Status Quo

Redefining the aerospace industry.

## Expand the Meaning of Space Itself

Transforming access, relevance, and impact of space on Earth and beyond.

## Inspire Internal Excellence

Building the future of space, together.

Tagline

# We Know Space

# Values

- \* Unified Purpose**  
Why we do it and who we do it for.
- \* Relentless Improvement**  
We iterate, learn, and evolve.
- \* Ruthless Prioritization**  
We are intentional in what we say yes to — and what we don't.
- \* Aggressive Mindset**  
We challenge what's possible.

Brand



# The Art of Intelligence

Designed to endure. Engineered for resilience. Built with precision.



# Concept

At Umbra, intelligence isn't just data — it's a discipline.

We've mastered the art of seeing the unseen by engineering systems that deliver precision at scale, resilience without compromise, and are proven where it counts: on orbit. This is **The Art of Intelligence** — a mindset and method we've honed to serve critical missions with clarity, deliver precision under pressure, and illuminate what others can't.

More than data or hardware, **The Art of Intelligence** is our belief that clarity is engineered — designed from the ground up to meet mission needs. Every element — from our parabolic mesh reflector to our tasking platform — reflects a mindset of precision, persistence, and purpose. Umbra systems don't just perform, they reveal. They endure. They adapt. That's how we deliver true advantage.

# Brand Background

Umbra is a company that questioned the rules — and found new beauty and utility in the shadows of space.

Our core differentiator is how we see the world — capturing data others can't, in conditions others can't handle.

We lean into that strength, transforming radar imagery into bold, abstract visual statements. By magnifying SAR imagery into rich, almost otherworldly textures, we celebrate both the beauty of the data and the power of what lies beneath it.

These visuals reinforce Umbra's role as a company that helps customers connect the dots — revealing patterns and insights that lie hidden in plain sight.

Underscoring the brand narrative: **'We see what, where, and when others can't'** — is a deeper message: there's more to see, both now and in what's ahead.

---

## Confident

Not shy about making the data itself the visual star

---

## Bold

Large-scale, striking imagery signals leadership and ambition

---

## Intriguing + Ownable

Invites curiosity drawing users into the brand

---

## Proactive

Reframes SAR from niche to visionary and opens door for future possibility

- \* Strategic, inventive, and grounded in mission execution.
- \* Confident without arrogance. Intelligent without jargon. Composed under pressure.
- \* Built to rethink the rules. Unafraid to challenge the limits of what's possible.

# About

# About

Umbra is a 100% U.S. owned and operated space technology company delivering advanced systems — from sensors to spacecraft — that empower customers worldwide with unmatched access to high-resolution radar data from space. Operating the most capable Synthetic Aperture Radar (SAR) constellation on the market, Umbra provides precision imagery in any condition, at any time. With a commitment to First Principles engineering, end-to-end system ownership, and rapid satellite customization, Umbra supports critical missions that deliver information advantages — **redefining what's possible in and through space.**

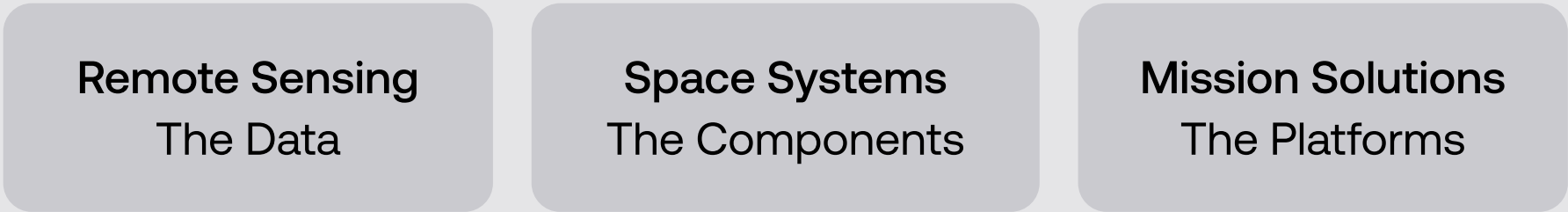
# About — Expanded

Umbra is an American space technology company built to push the limits of what’s possible.

We’re redefining what can be done in and through space — expanding access, increasing persistence, and delivering a powerful information advantage to our customers. From the ground up in the U.S., we design, build, test, and operate advanced systems — from sensors to spacecraft — engineering novel solutions tailored to the missions that matter most.

Our agile Synthetic Aperture Radar (SAR) constellation is the most capable system on the market — producing the highest-quality imaging data in any condition, at any time. Built for unmatched resilience, our system illuminates what others miss and empowers customers with persistent access, resilient performance, and proven results on orbit — not just on paper. Our commitment to First Principles engineering has fueled year-over-year growth since our market entry in 2021. And we are only just getting started.

Umbra’s ecosystem today:



Together, these capabilities make Umbra the most effective partner in the market — delivering the flexibility, performance, and resilience your mission demands. By continuously designing, building, and operating our own systems, we’re constantly refining our technology, our products, and our craft.

Our radar imagery is the direct result of our platform effectiveness — precision from orbit, powered by our integrated hardware and software. Because we’ve mastered the details, we can customize satellites quickly and reliably. Now, we’re offering others the same building blocks that make our missions possible.

We know space. And we’re continuing to redefine it.

# Why Umbra



# Why Umbra

In today's world,  
space systems can't  
just work — they  
must deliver. Anytime.  
Anywhere. Without  
compromise.

## Umbra does more with less.

Our SAR satellites deliver unmatched clarity and coverage, with fewer required assets and faster revisit. Enabled by our parabolic mesh reflector, we unlock deeper resolution and broader access — even in the world's most contested, complex environments.

What sets us apart isn't just what we build — it's how we build it.

We design, build, and operate every layer of the system — from sensors to satellites to software — all optimized for real-world missions, not just technical specs.

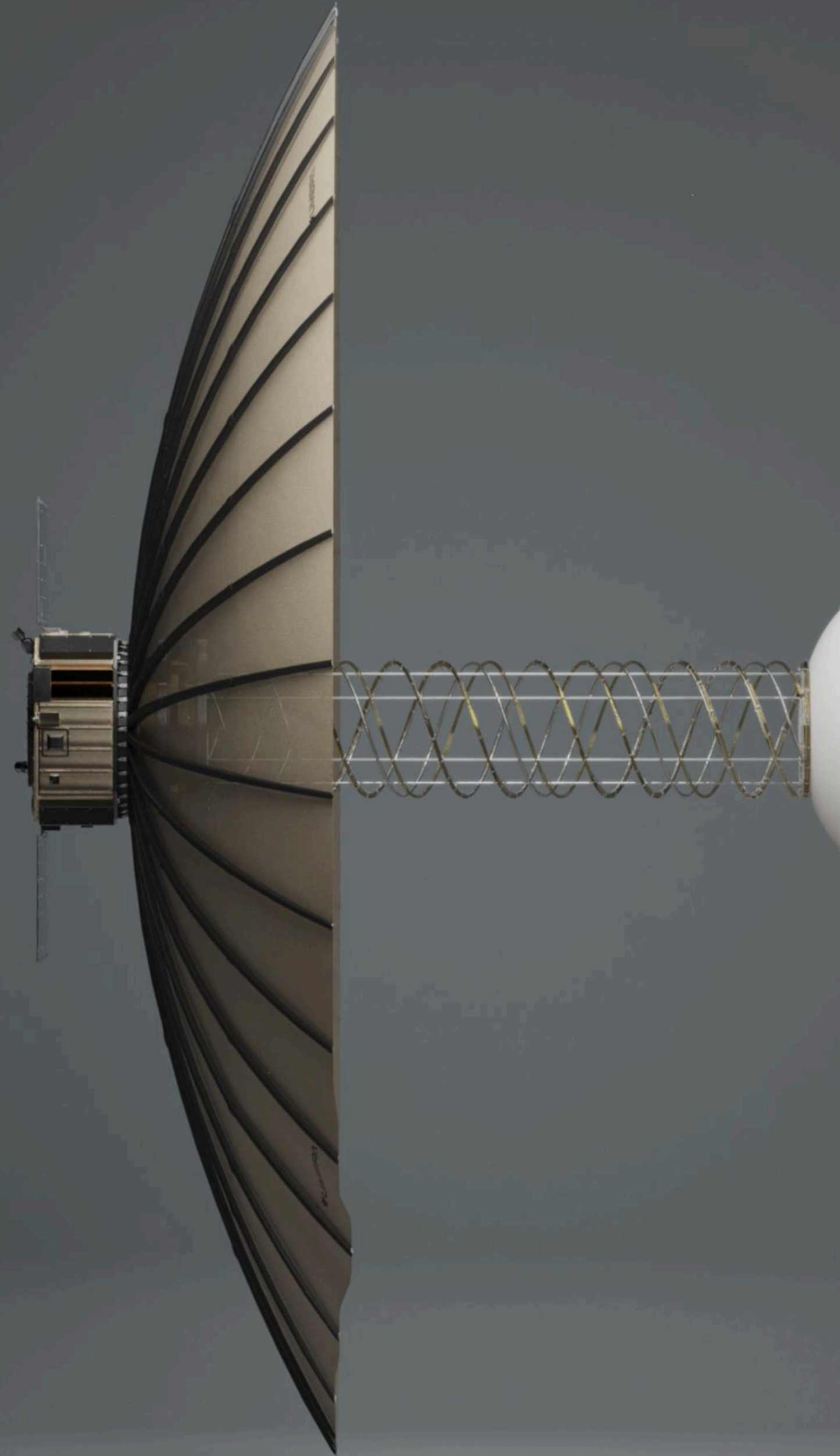
We're built for the demands of today and the challenges of tomorrow:

- **Rapid access** to any area of interest
- **Resilient performance** in denied and degraded conditions
- **Scalable delivery** for growing and evolving missions
- **Where others go dark, Umbra sees through** — with uninterrupted operations in all conditions

This is the Umbra advantage: We see what, where, and when others can't. Persistent. Proven. Ready when it matters.

# One-Liners

Redefine Space.

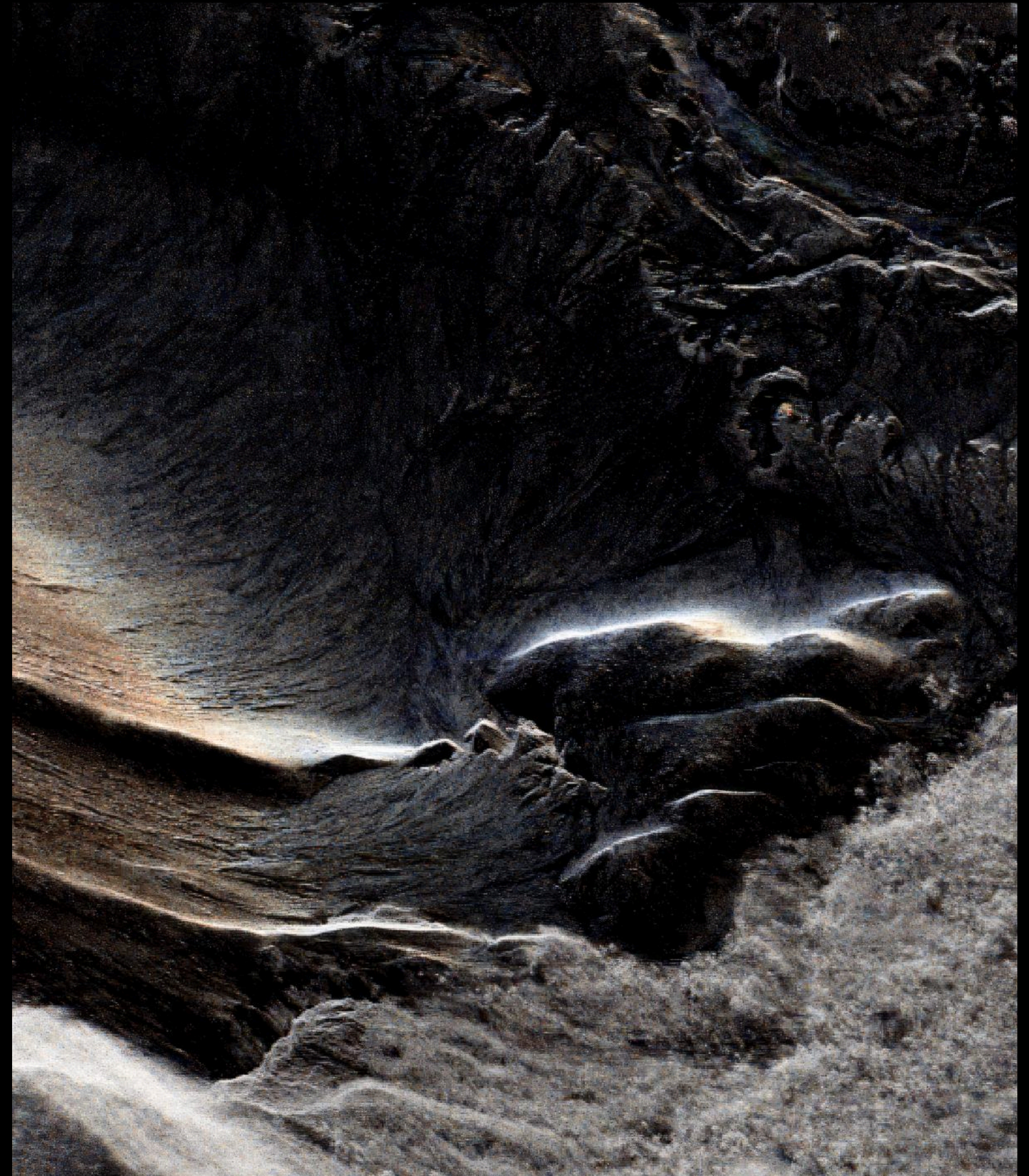


**UMBRA**



We Know Space.

UMBRA





We See What,  
Where, and When  
Others Can't.

UMBRA



# We Build It. We Fly It.

UMBRA





UMBRA

Your Mission.

---

Our Obsession.



The background of the image is a close-up, low-angle shot of a modern architectural structure. It features a series of dark, curved, metallic-looking panels that are layered and slightly offset from each other, creating a sense of depth and movement. The surface of these panels has a fine, grid-like texture. The lighting is dramatic, with strong highlights and deep shadows, emphasizing the geometric forms and the material's texture.

We Design It. We Build It. We Operate it.

**UMBRA**



# Form the Vision. Deliver the Advantage.

UMBRA



# Business Messaging



# Remote Sensing: The Data



# About Remote Sensing

## The Data

Umbra delivers the most capable SAR data on the market — high volume, high-quality, and globally available with unmatched responsiveness and reliability. Our constellation is purpose-built for real-world intelligence: to empower users with critical insights, clarity, and decisive awareness in dynamic environments. We deliver impact where and when it matters.

SAR is foundational to intelligence — when others see surface, SAR sees through. Where others wait for daylight, SAR operates relentlessly. And Umbra’s is engineered to go further. Every mission is an opportunity to deliver clarity under pressure and illuminate what others can’t. Our advantage isn’t just in what we build — it’s in how we build it. We are involved in every later — from sensor to spacecraft to system.

### Outperform on persistence

We engineer the most persistent, U.S.-built SAR satellites on orbit and in the market — we don’t have the largest constellation, but we see more of the world, more often than our competitors.

### Drive real operational outcomes

We have more access, over more area, more often. Our antenna enables this; our systems deliver it.

### Iterate at mission speed

Our vertically integrated model lets us customize platforms faster and more cost-effectively than anyone else.

We deliver unmatched access, quality, and responsiveness — with the persistence to see what others miss and the power to deliver where it matters most.

# Why Umbra SAR Data

**We see what,  
where, and when  
others can't.**

## Unmatched Volume

Up to 5x more imagery over a given area than competitors.

## Global #1 Image Quality

Fidelity, definition and precision — trusted for critical decisions.

## Multi-Mode Collection

Scan, strip, spotlight — optimized for mission flexibility.

## Fast Tasking-to-Delivery

Intuitive self-service platform with rapid, reliable turnaround.

## Workflow-Ready

Real-time tasking visibility and seamless API integrations, allowing for automated operations.

## Transparency

High volume, high value — under a single Creative Commons license with no royalties, restrictions, or surprises.

We See What, Where, and When Others Can't.

The World in Focus.

Built. Operated. Captured.

Already There.



The Jason Bourne of SAR:

A step ahead. Relentless. Precise.  
Ultra-capable under pressure.



## Business Messaging

# Space Systems: The Components





# About Space Systems

## The Components

At Umbra, components aren’t line items — they’re the building blocks of something bigger.

Our hardware is built from a foundation of operational experience, shaped by the real-world demands of our SAR constellation. We design, build and deploy critical systems — powered by our software — guided by a simple principle: it has to work when it counts. Each bolt, board, and bracket is forged by engineers who don’t just design for the mission — they live it. From power and communications to control and deployment, our hardware is flown, tested, and trusted in our own systems, under real-world conditions where failure isn’t an option. Because when it works together, it works.

This is Hardware Culture — a mindset where code and components are fused by necessity, not convenience. Designed not for catalogs, but for consequences. Every element is engineered for power, resilience, clarity, and control. Because a mission is only as strong as what it’s built on.

# About Space Systems

## Built for Operators, by Operators

To set a new pace, we took matters into our own hands — applying First Principles engineering to design and build every component from the ground up, based on what we knew the mission demanded.

Our inaugural lineup of hardware across four mission-critical categories:

### Power

Systems engineered for endurance and efficiency. From our battery modules and solar arrays to complete power systems, these are proven solutions that keep missions alive longer and working harder.

### Control

Precision attitude and maneuvering technology, including our MSS package, reaction wheels, and Magnetorquer 6: built to adapt and hold steady under pressure.

### Communications

Robust, resilient links. Our S-band radios and network switches deliver clarity and speed, even through interference and challenging conditions.

### Deployment

Hardware that delivers clean separation, reliable actuation, and mission success.

**We build it.  
We fly it.  
We stand  
behind it.**

# Why Umbra Hardware

## Flight-Proven

100% success across our own spacecraft platforms since day one — we only sell what we trust to fly ourselves. Every part has earned its place on orbit.

## For Operators, by Operators

We don't just build — we operate on orbit. That experience shapes every design and every detail. Performance backed by firsthand knowledge.

## Timely Delivery

We build to meet our own launch schedules — and yours. No guesswork. No slippage.

## American-Made

Designed, built, and trusted in the U.S.

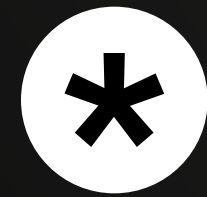
We don't start with theory. We start with flight. These parts are built to last and ready to deliver. Not just space rated. Umbra-rated.

Our Space Systems— American-made hardware and software—deliver performance where it counts.

**We Build It. We Fly It. We Stand Behind It.**

**Proven On Orbit. Trusted Worldwide.**

**Not Just Space Rated. Umbra-Rated.**



## The Rocky of Hardware — Powered by Software:

American-made. No-frills. Powerful.  
Unapologetically tough. Built to take a  
beating and keep performing.



## Business Messaging

# Mission Solutions: The Platforms



# About Mission Solutions

## The Platforms

At Umbra, we don’t just build satellites — we build secure, mission-specific systems without compromise.

We’ve designed, built, and operated the world’s most capable, private SAR system on orbit. That same engineering playbook now powers purpose-built systems for U.S. and allied defense and intelligence — engineered to meet exacting requirements and delivered on timelines that match the urgency of the mission.

Whether it’s a custom payload, a full-stack spacecraft, or the infrastructure behind an entire constellation, Mission Solutions gives you complete control to shape your architecture, operations and outcomes — backed by Umbra’s proven flight heritage and first principles approach to engineering.

**Your mission success is our obsession.** Every layer — from architecture to data — is developed in-house to simplify integration, accelerate delivery, and ensure resilience by design.

# Why Umbra Mission Solutions

Our satellites deliver high-volume, high-quality SAR data with low latency — built to perform in the most contested and complex environments. Our approach to delivering the system is what ultimately delivers your advantage.

## Proven by Us. Built for You.

We draw from our own operational experience, not theory. Our satellites aren't just designed — they're deployed, tested, and trusted on orbit.

## Resilience by Design.

Our systems are built to operate through denial, deception, and disruption. With SAR at the core — actively illuminating what others miss - resilience isn't a feature; it's a foundation.

- SAR-native — sees through darkness, weather, and concealment — anytime, anywhere
- Parabolic mesh antenna — wider access, faster revisit, fewer assets
- Power efficient — more collections per pass, for a longer duration
- Proven — performs continuously in contested environments

## Custom, Mission-Aligned Models.

Build-to-own. Lease. Hybrid. We offer flexible paths to capability — and we'll never force you into someone else's roadmap. With Umbra, you gain complete mission control and flexibility from start to finish.

## Full-Stack Integration. Total Customization.

We own every layer — from design to delivery — enabling rapid iteration, turnarounds, seamless integration, and true mission alignment.

## Uncompromising Performance.

Flight-proven systems. Mission-critical outcomes. We will explore everything and compromise nothing.

- 5x more imagery over given area — scalable and growing
- Cost-efficient at scale — high performance, low cost-per-image
- Multiple Modes: Scan, Strip, Spotlight — mission flexibility built in
- Global top-rated image quality

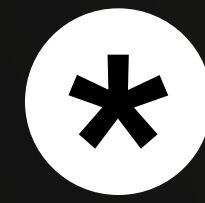


**Your Mission. Our Obsession.**

**Your Mission Made Possible.**

**Form the Vision. Deliver the Advantage.**

**We See What, Where, and When Others Can't.**



## The Ethan Hunt of Systems:

Relentlessly mission driven.

Highly adaptable. Secure. Strategic.

Built for impossible objectives.



Our visual language speaks volumes. This section dives into the building blocks of Umbra's visual presence — from our logo to our carefully curated color palette and typography.

These elements work in harmony to create a strong, recognizable brand look and feel that resonates across all platforms and audiences.

# Visual Identity

01 Heart of the Brand

02 Our Logo

03 Our Colors

04 Our Fonts

05 Our Photos



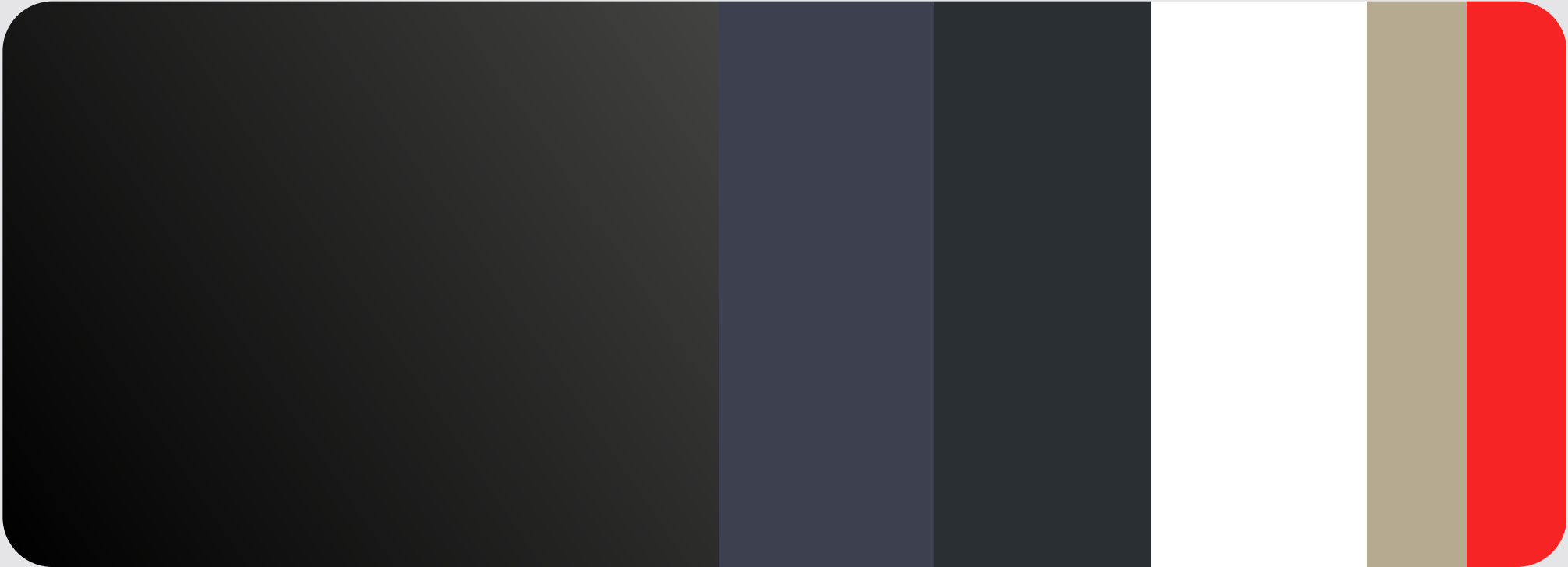
# Heart of the Brand



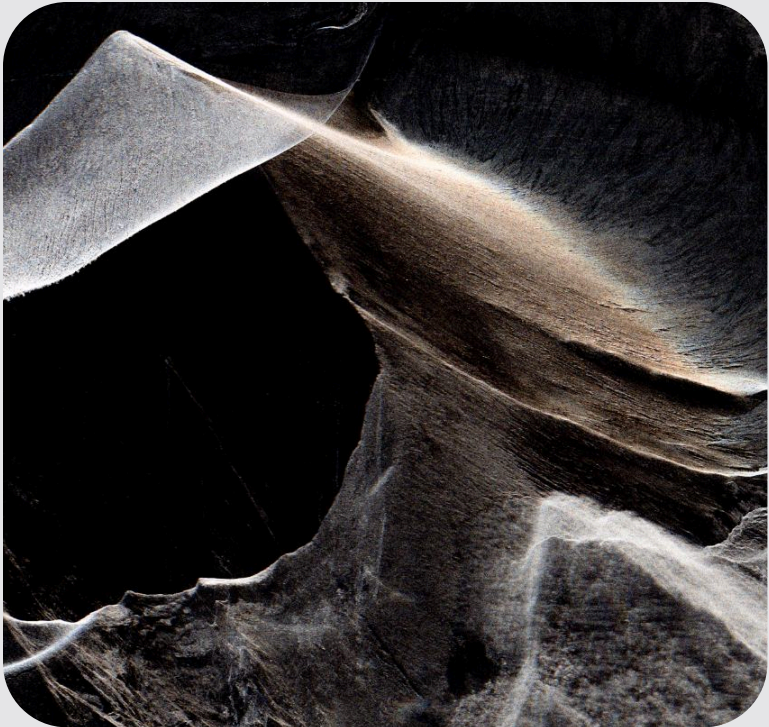


We Build It.  
We Fly It.

UMBRA



YOUR MISSION.  
OUR OBSESSION.



UMBRA

We see what,  
where, and when  
others can't.





# Our Logo



## Primary Logo

### Full Mark + Logotype On Dark Matter Background

Umbra's primary wordmark;  
bold, established, clever and  
industry-focused.


This version is approved for dark  
backgrounds in one-color white.

UMBRA



## Full Mark + Logotype on Photographic Backgrounds

Umbra's primary wordmark may be used on photographic backgrounds as long as legibility is maintained. Ensure there is enough contrast between the logo and the background image for clear visibility.



# UMBRA



Full Mark + Logotype  
On White Background

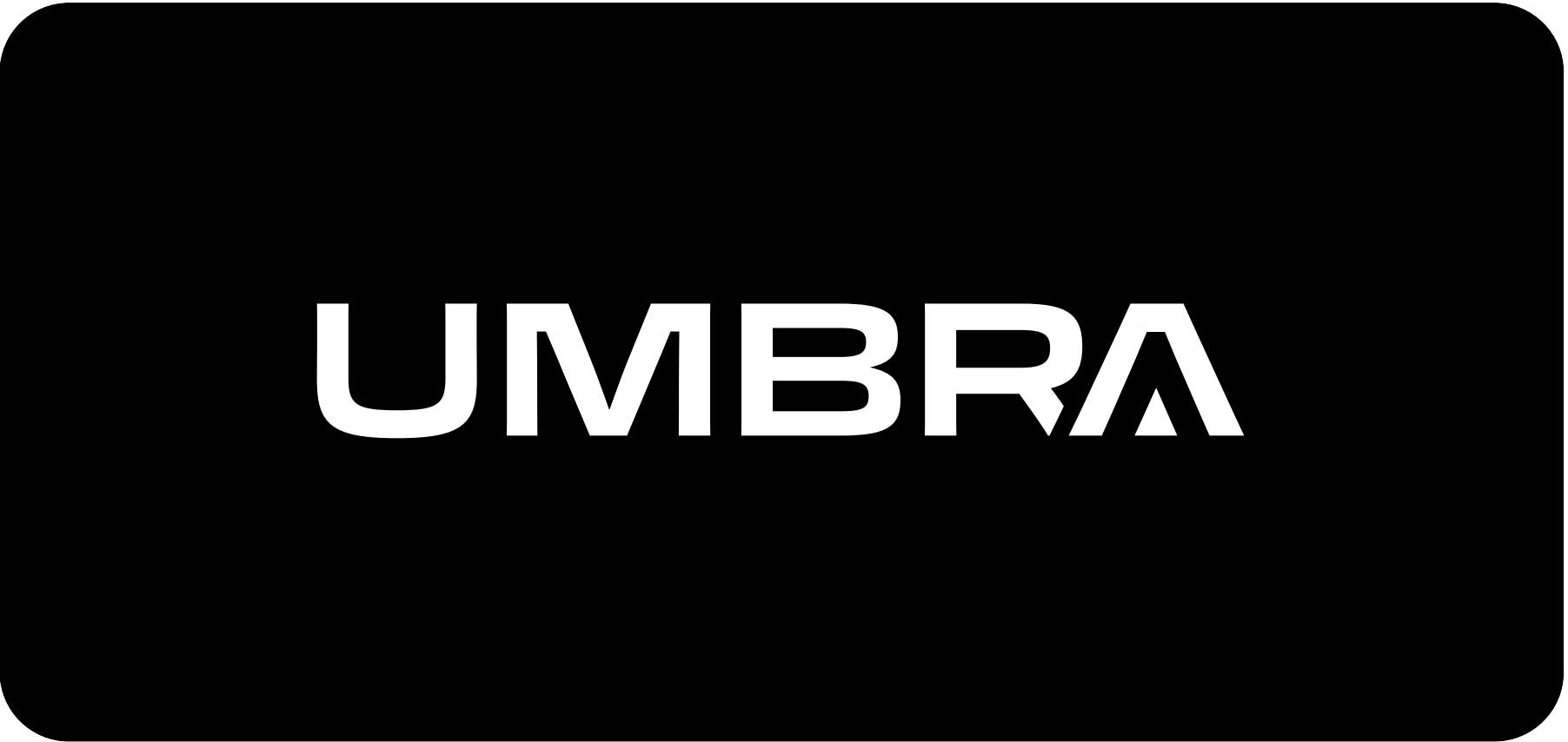
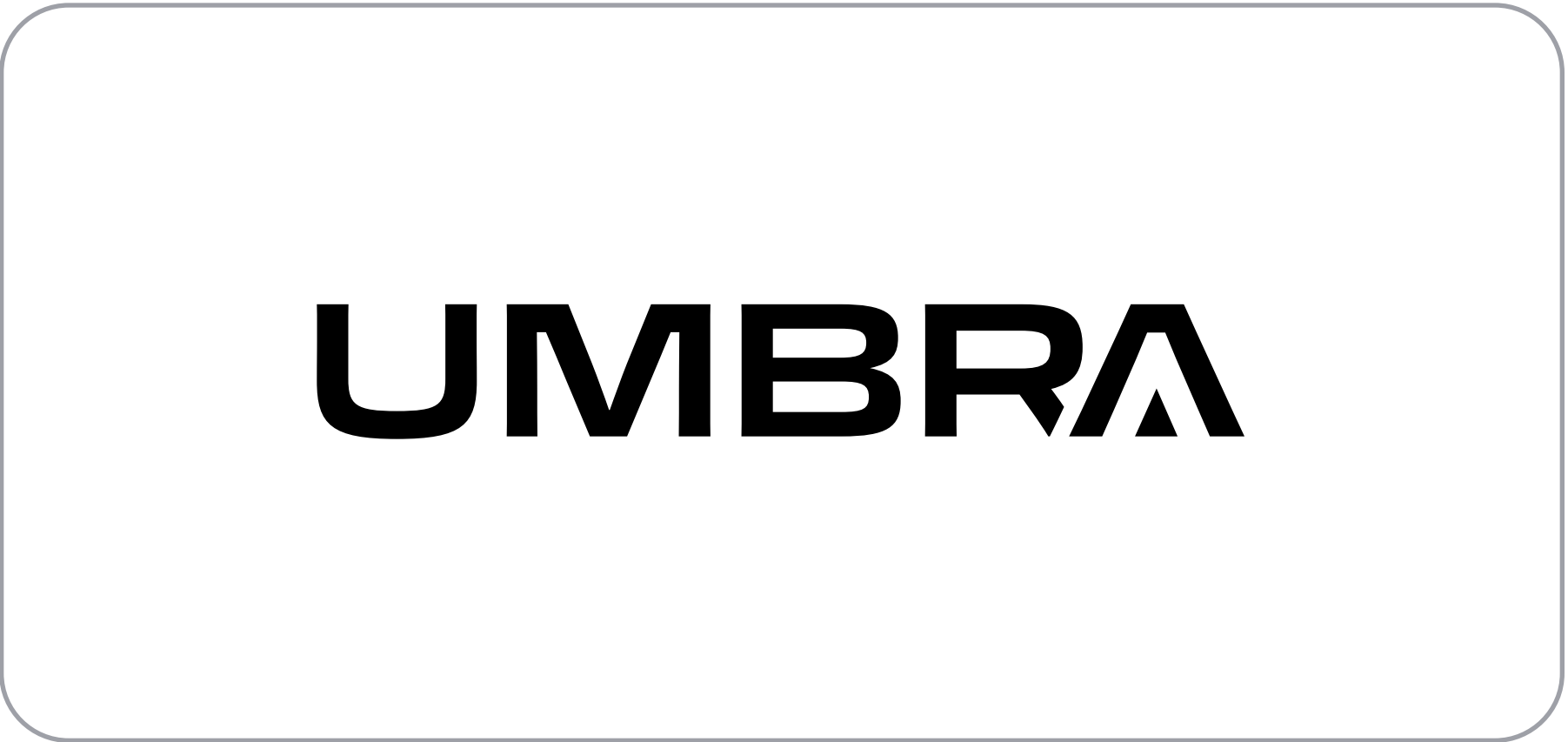
This version is approved for use on  
Moon color backgrounds.

UMBRA



# Logo Colors and Usage

Overview of Umbra’s primary color usage options for the wordmark on light and dark backgrounds. This color style is to be used as a default.

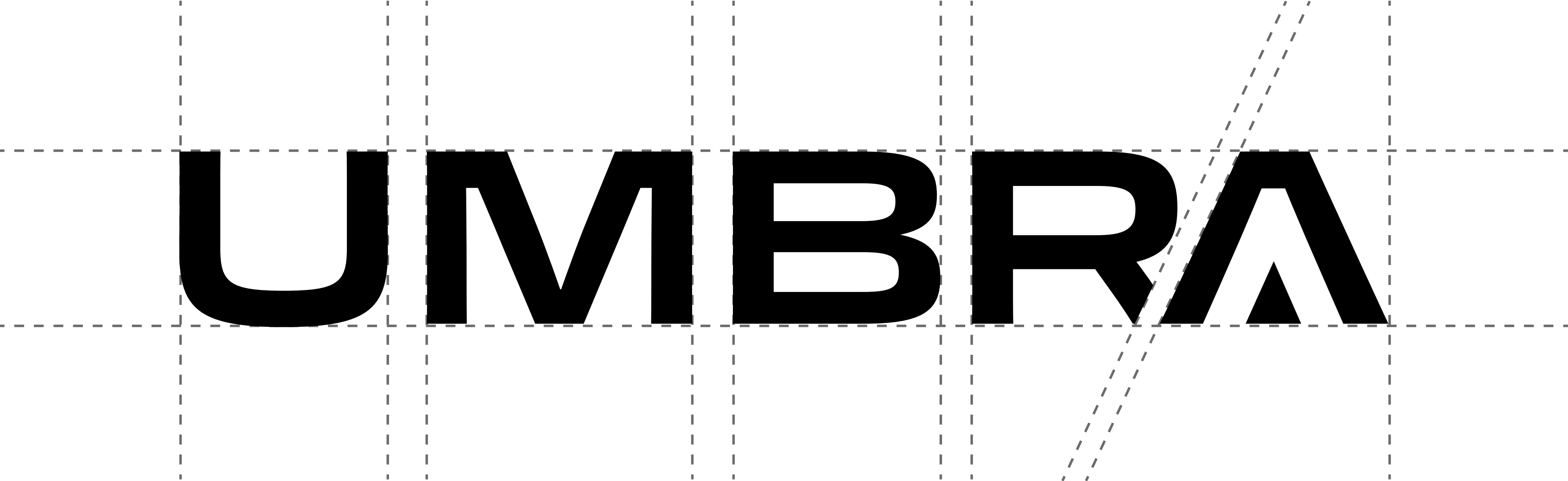




# Alignment

## Primary Logo Alignment

This version is default for primary logo use. The logotype should not be altered — i.e. not be resized, moved closer or farther apart.





# Clear Space

## Type Exclusion Zone

The exclusion space above the wordmark is equivalent to the height of the ‘A’ of the wordmark. To the left and right the exclusion space is equal to the width of the logomark.

No element should enter this space so the wordmark remains clear and legible.





# Logo Misuse

## Incorrect Usage

Visual examples of the incorrect usage of Umbra's primary wordmark, this also applies to other brand assets such as the secondary mark.

### Do not:

- Change the logo's kerning
- Rotate the logo
- Rearrange the logo
- Stretch or condense the logo
- Tilt, skew or shear the logo
- Apply any drop shadow
- Outline the logo
- Add a surrounding container
- Use unofficial color values
- Use a gradient effect
- Use different values mark and type
- Use on an all red background - in either red or white.





Logo Minimum Size

The minimum size for the logo is equivalent to the height of 24 pixels.

Minimum Size

UMBRA

UMBRA

UMBRA

UMBRA

UMBRA

UMBRA

24px Recommended Minimum Height



# Our Colors



Dark Matter Black

RGB R 0 G 0 B 0

HEX #000000

Dark Matter Gray

RGB R 68 G 68 B 67

HEX #444443

Midnight

RGB R 61 G 65 B 79

HEX #3D414F

Shadow

RGB R 42 G 48 B 53

HEX #2A3035

Moon

RGB R 255 G 255 B 255

HEX #FFFFFF

Nova

RGB R 247 G 37 B 37

HEX #F72525

Sunstone

RGB R 182 G 170 B 145

HEX #B6AA91



# Primary Color

The primary color of the brand is Dark Matter and should be deployed in most collateral pieces as the foundation for the design color system.

Note: it is a gradient and features a range between two colors. If only one color is able to be used, use the code for the dark end of the spectrum.





# Secondary Colors

The secondary colors of the brand are Midnight and Shadow and should only be deployed in marketing materials, decks, and brand collateral.

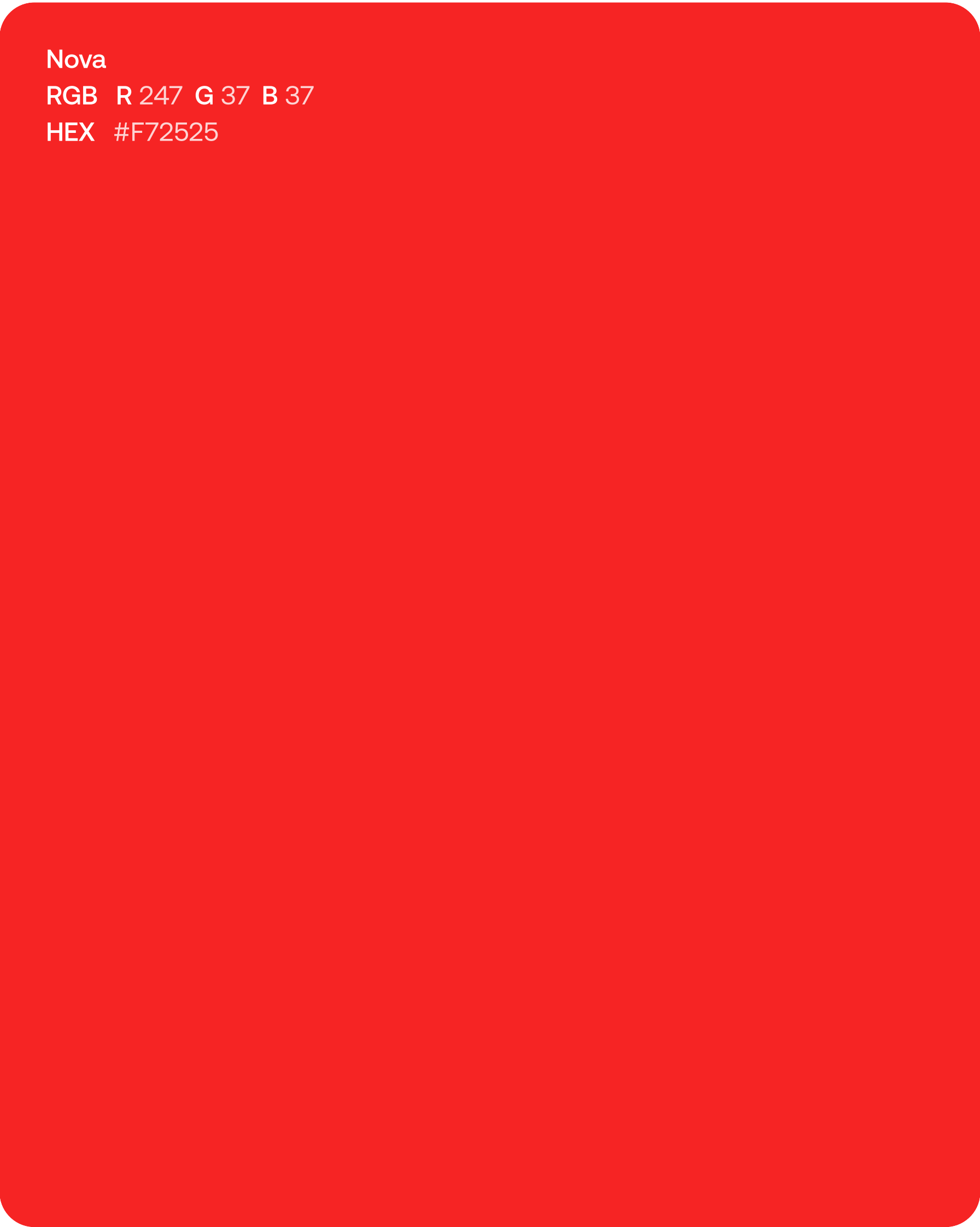
Midnight  
RGB R 61 G 65 B 79  
HEX #3D414F

Shadow  
RGB R 42 G 48 B 53  
HEX #2A3035

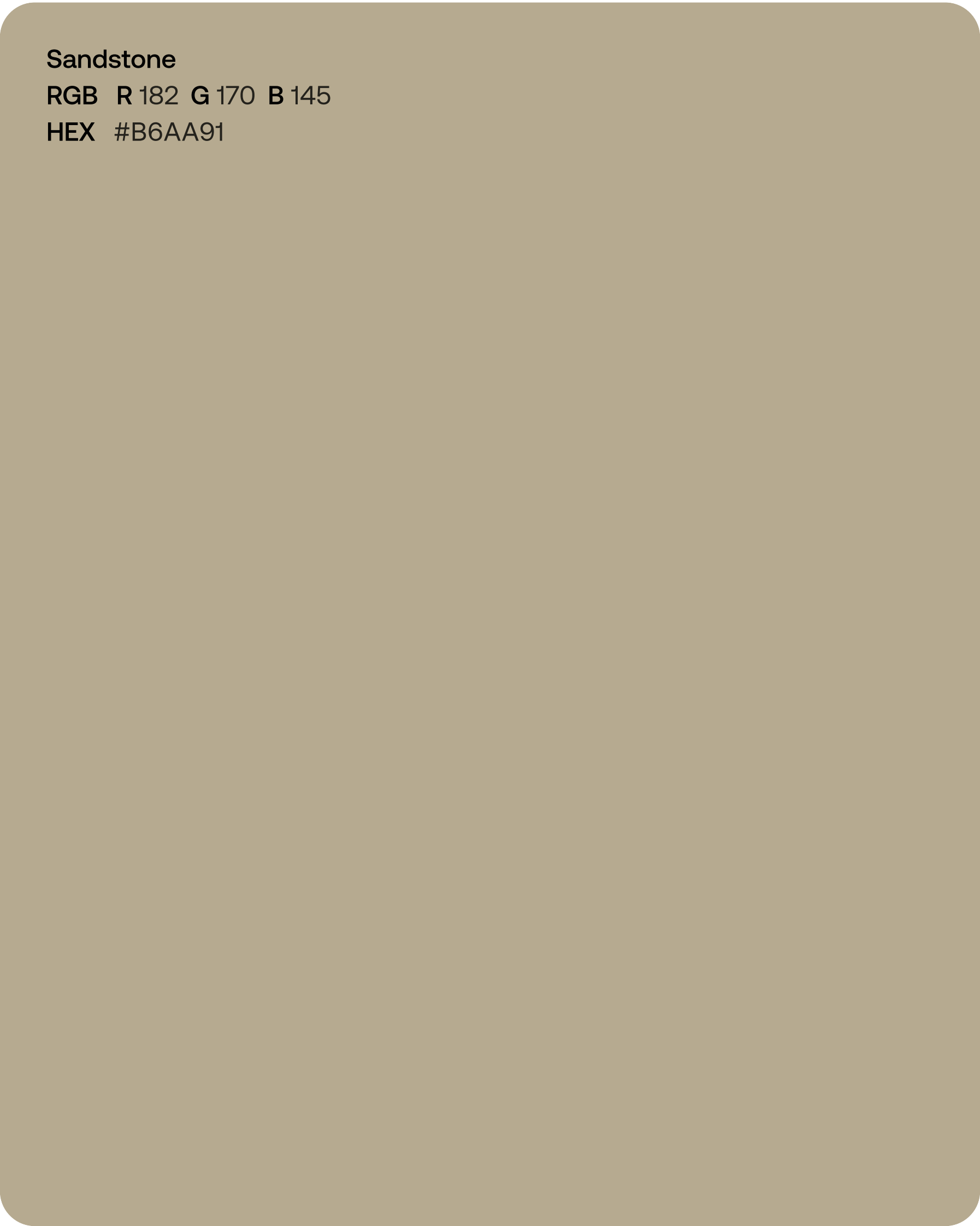


# Accent Colors

Nova and Sandstone are accent colors meant to be used on other background colors. Use them for small elements like text highlights, callouts, or graphics—not for full backgrounds.



Nova  
RGB R 247 G 37 B 37  
HEX #F72525



Sandstone  
RGB R 182 G 170 B 145  
HEX #B6AA91



# Color Pairings

Background and foreground color should have enough contrast for visibility, especially when applying to text.

Accent colors cannot be used as backgrounds.

Foreground/background color can be reversed.

Aa	Aa	Aa	Aa
Aa	Aa	Aa	Aa
Aa	Aa	Aa	



# Our Fonts



Aeonik Medium is the brand typeface for Headlines.

Space Mono All Caps is for Subheads, Tagging and Callouts.

Aeonik Regular is the brand typeface for Body copy, and Aeonik Medium can be used as Body copy emphasis.

# Harnessing the power of space.

ABOUT US

Umbra’s core differentiator is how we see the world — capturing data others can’t, in conditions others can’t match.

We lean into that strength, transforming radar imagery into bold, abstract visual statements. By magnifying SAR imagery into rich, almost otherworldly textures, we celebrate both the beauty of the data and the power of what lies beneath it.

These visuals reinforce Umbra’s role as a company that helps customers connect the dots — revealing patterns and insights that lie hidden in plain sight.

Underscoring the brand narrative: ‘**We see what, where, and when others can't**’ — is a deeper message: there’s more to see, both now and in what’s ahead.

Umbra is a company that questioned the rules — and found new beauty and utility in the shadows of space.



Regular

Aa Bb Cc Dd Ee Ff Gg Hh Ii Jj Kk Ll Mm Nn Oo Pp  
Qq Rr Ss Tt Uu Vv Ww Xx Yy Zz  
1234567890!@#\$%^&\*

Medium

Aa Bb Cc Dd Ee Ff Gg Hh Ii Jj Kk Ll Mm Nn Oo Pp  
Qq Rr Ss Tt Uu Vv Ww Xx Yy Zz  
1234567890!@#\$%^&\*



REGULAR

A B C D E F G H I J K L M N O P Q R S T U V W X Y Z  
1 2 3 4 5 6 7 8 9 0 ! @ # \$ % ^ & \*

Space Mono Semibold is only used as  
small accent type.

THIS TYPEFACE IS ALWAYS ALL CAPS.



Regular

Aa Bb Cc Dd Ee Ff Gg Hh Ii Jj Kk Ll Mm Nn Oo  
Pp Qq Rr Ss Tt Uu Vv Ww Xx Yy Zz  
1234567890!@#\$%^&\*

Bold

Aa Bb Cc Dd Ee Ff Gg Hh Ii Jj Kk Ll Mm Nn  
Oo Pp Qq Rr Ss Tt Uu Vv Ww Xx Yy Zz  
1234567890!@#\$%^&\*

Arial can be used in when the primary font, Aeonik is not available. Specifically in Microsoft Office software like Word.

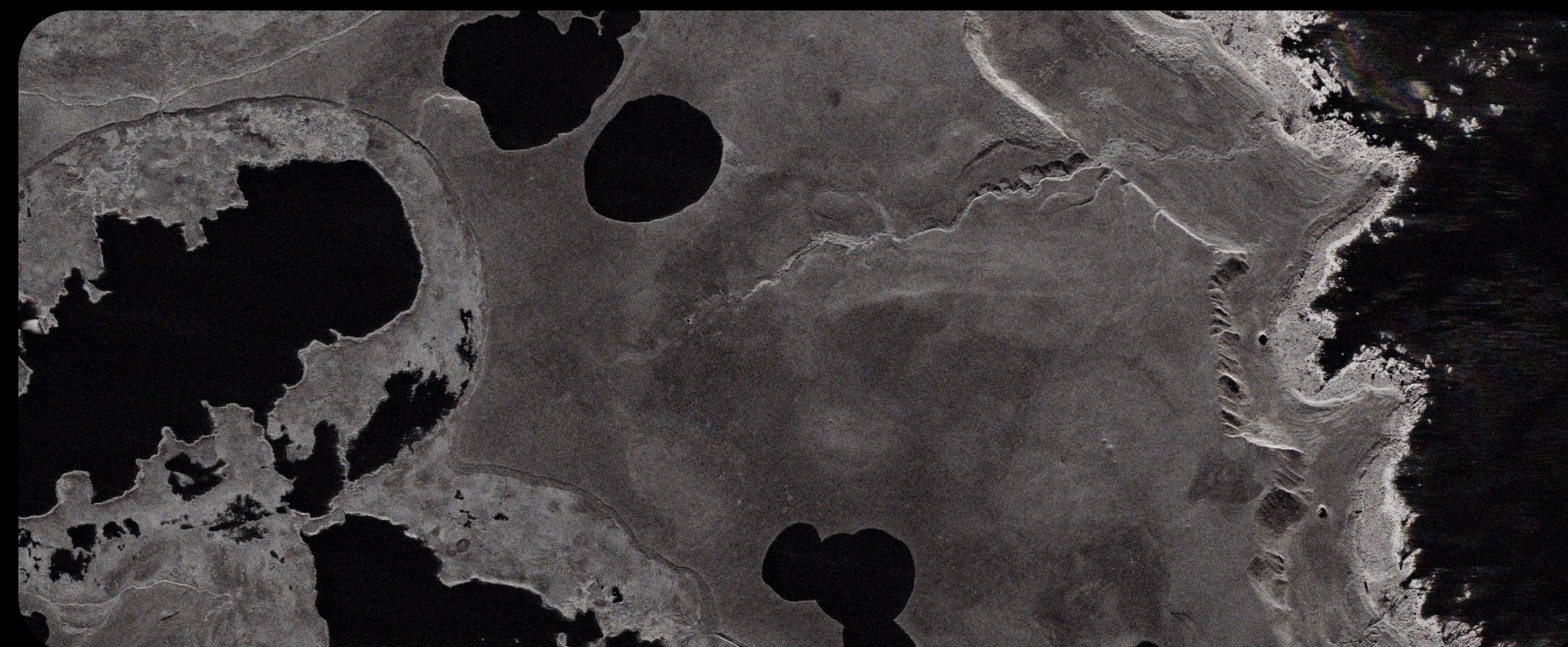
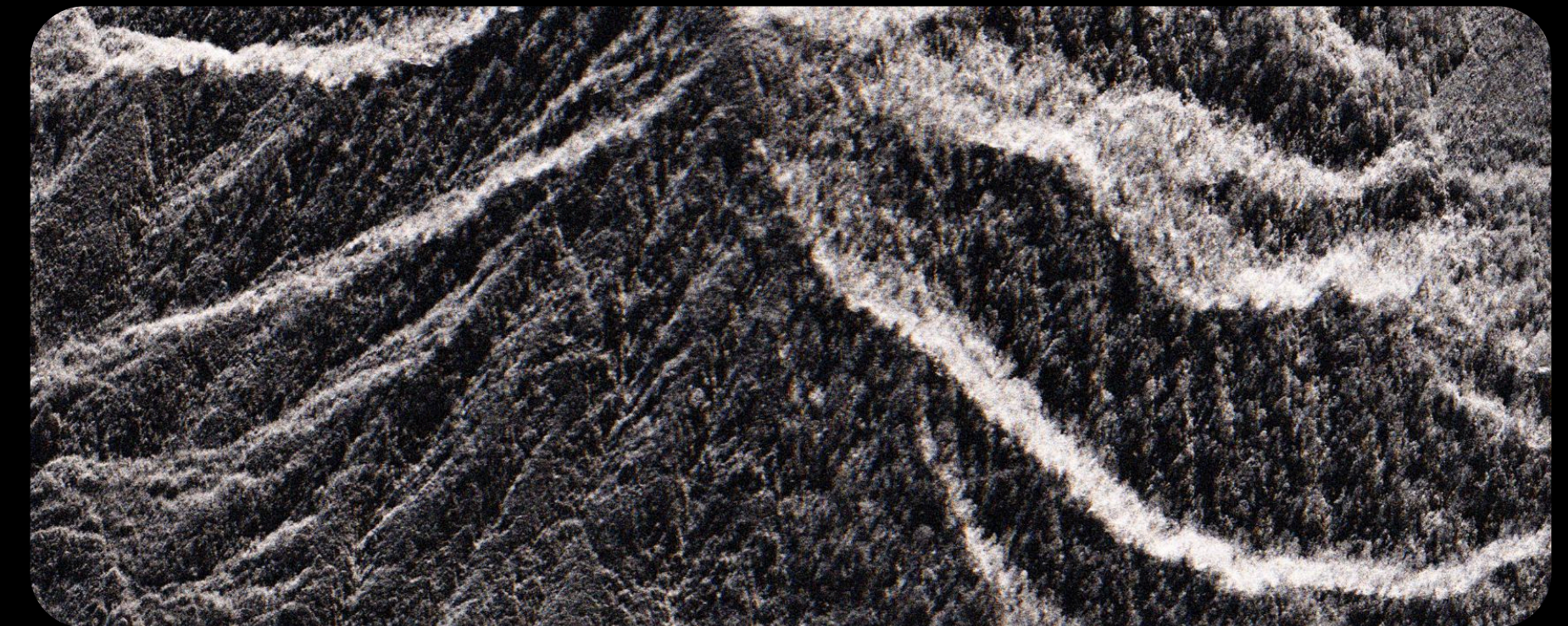
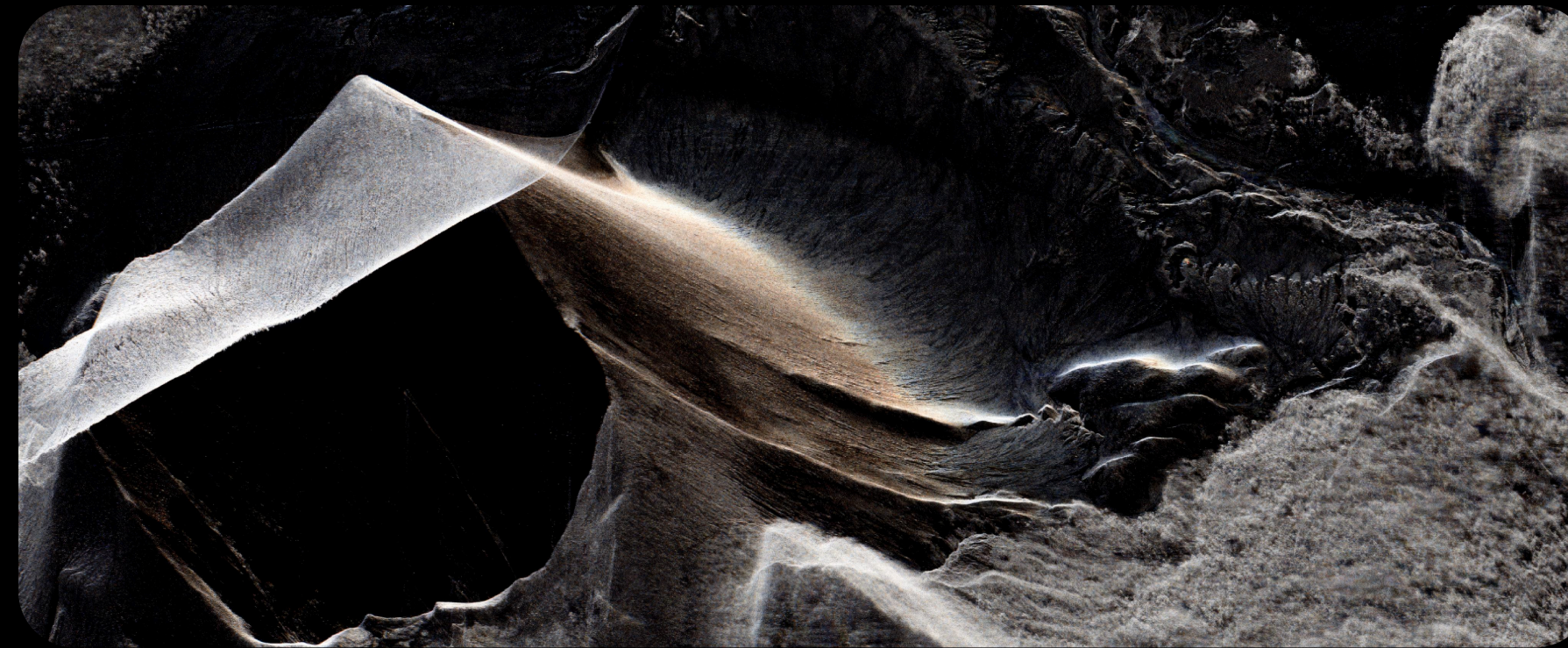


# Our Photos



# SAR Imagery

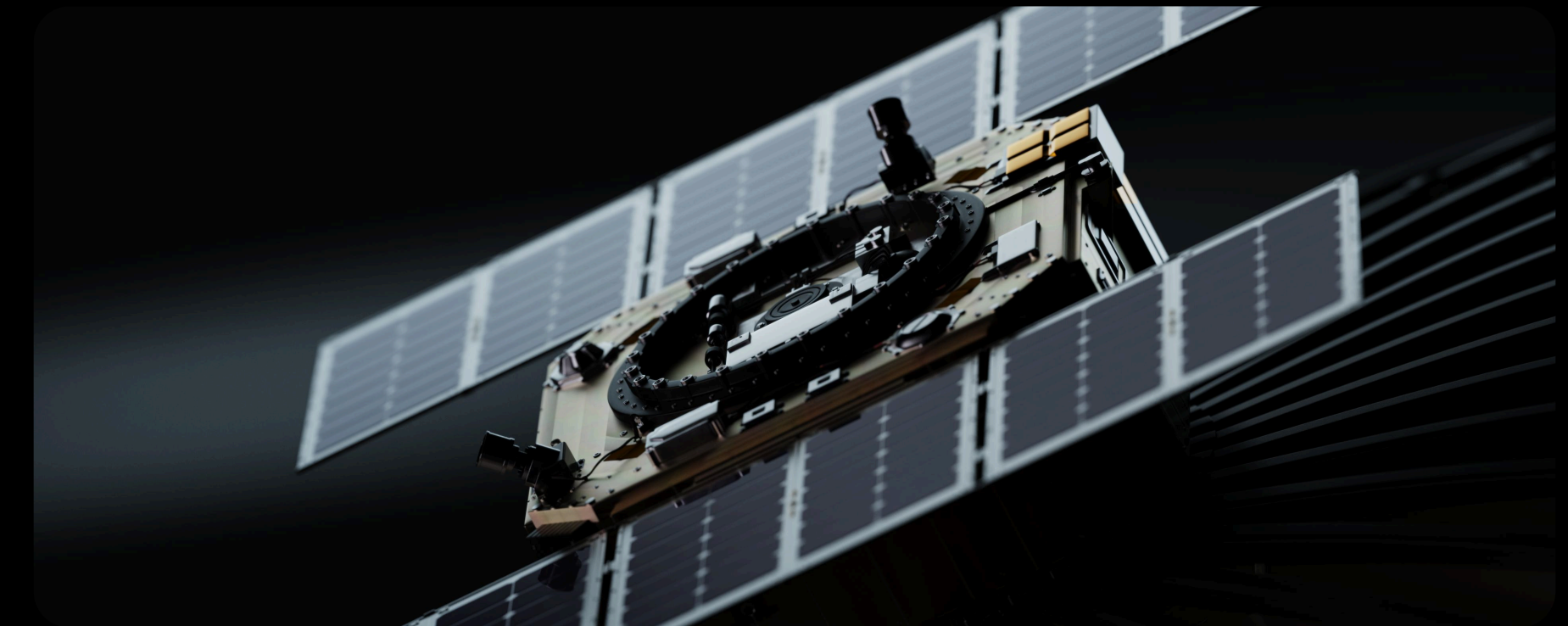
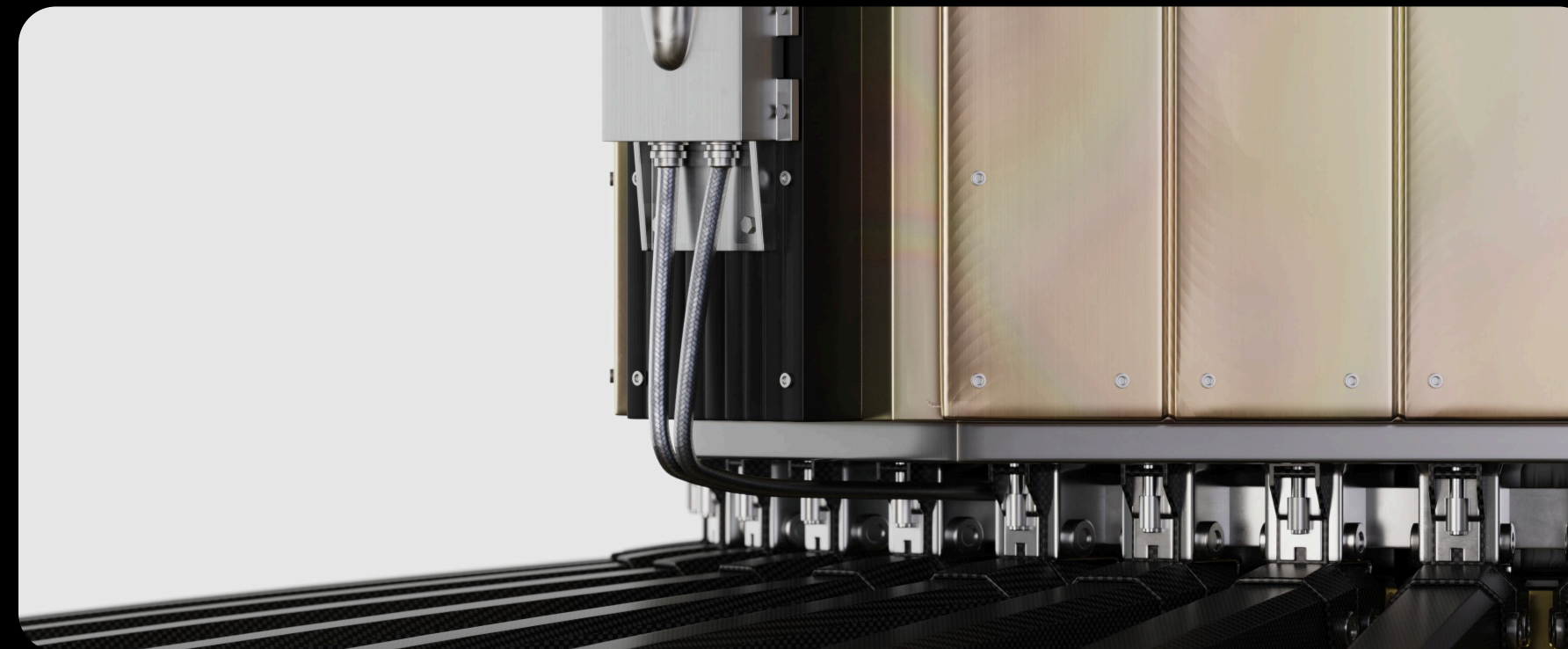
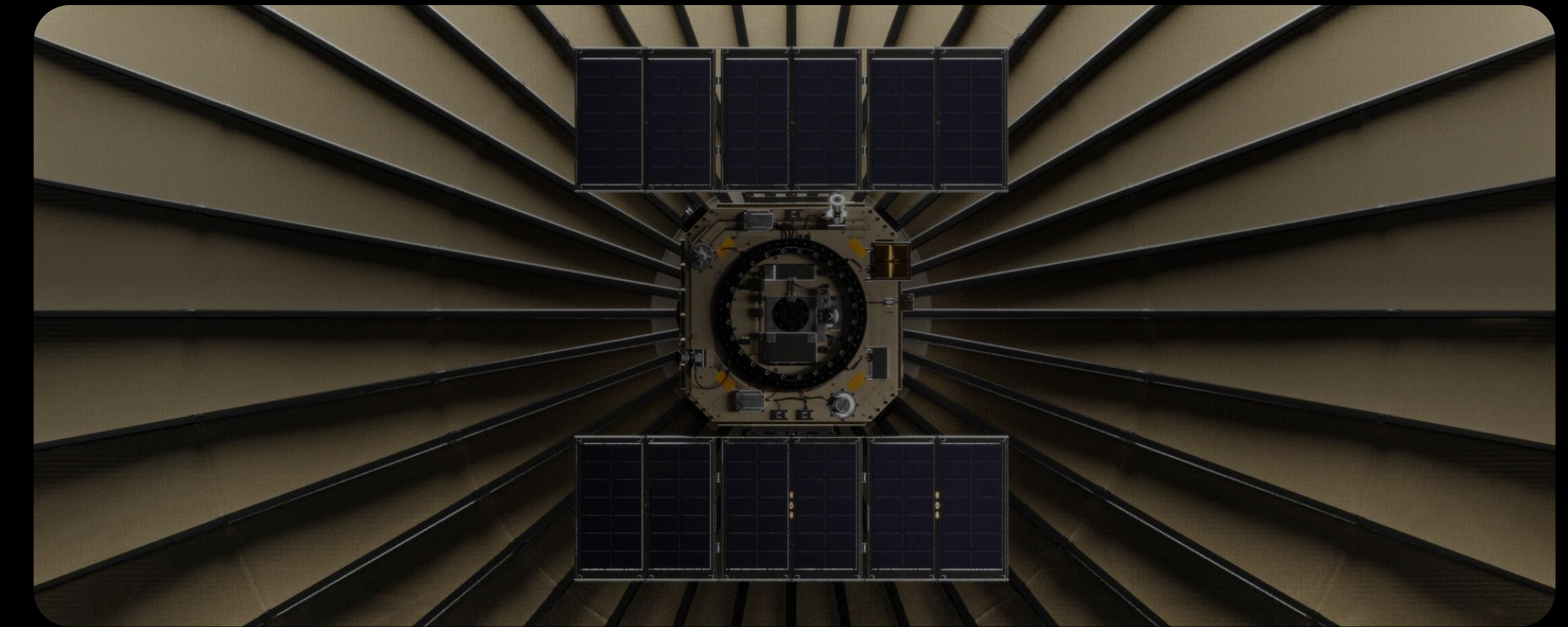
By pulling from the existing photo bank and using thoughtful, artful cropping, this approach reveals the natural beauty and abstract qualities within satellite imagery. Patterns in terrain, coastline geometry, and urban grids become textural elements—highlighting the scale and precision of Umbra’s perspective from orbit.





# Satellite Photography

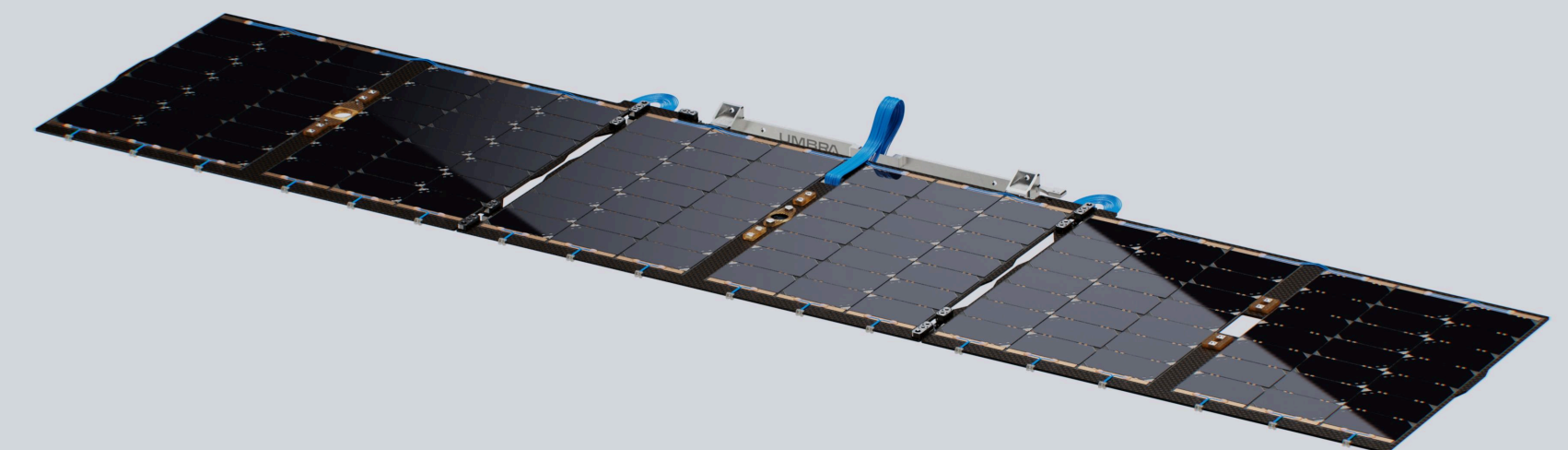
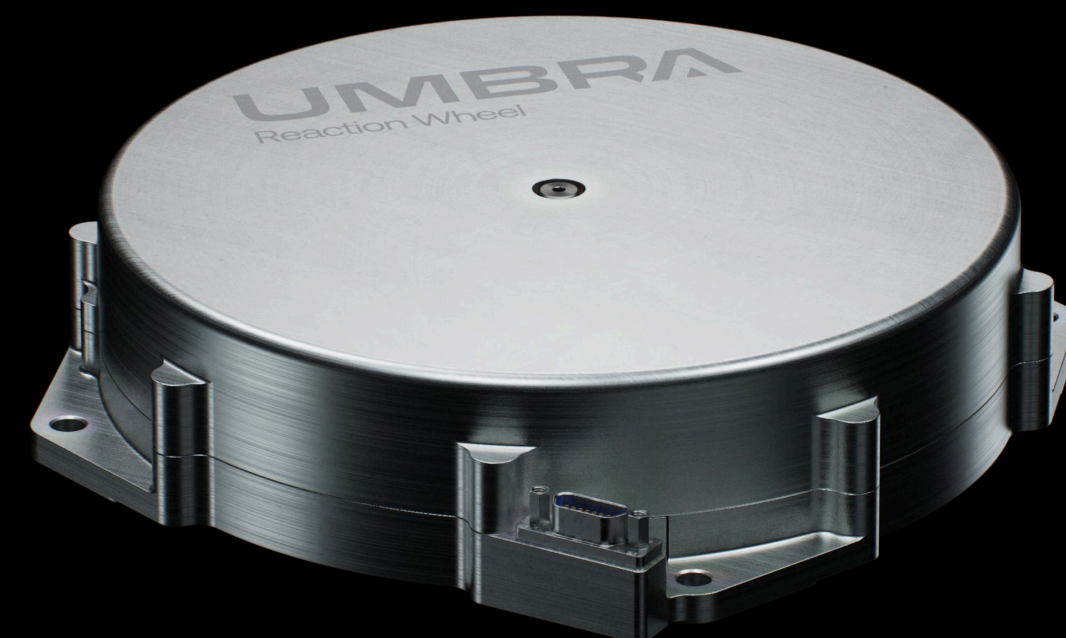
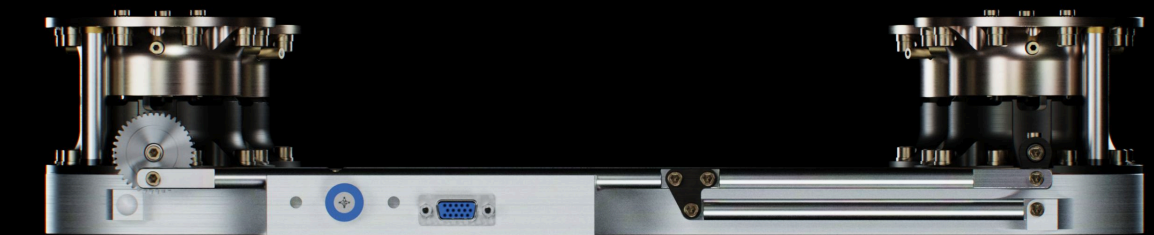
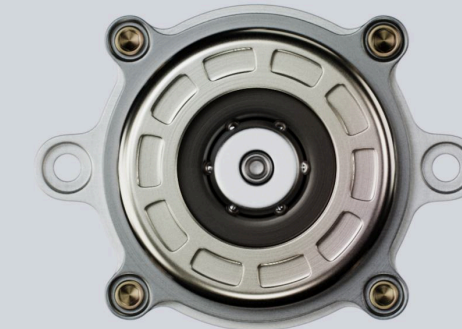
By using high-resolution product images and intentional zoom-ins, this approach highlights the fine details and textures of Umbra's technology. Functional components—such as surface panels, joints, and materials—take on abstract, graphic qualities, reinforcing the precision and innovation at the core of the brand.





# Component Photography

By using high-resolution product images and intentional zoom-ins, this approach highlights the fine details and textures of Umbra's technology. Functional components—such as surface panels, joints, and materials—take on abstract, graphic qualities, reinforcing the precision and innovation at the core of the brand.





This section guides you through implementing our visual elements in both printed and digital, non-website applications, so that our brand is consistent no matter where our audience encounters us.

01 Presentation Slides

02 Digital

03 Print

# Applications



# Presentation Slides



# About Us

01

Sample section divider that can be used to visually separate content areas and introduce new topics within a presentation.





## Sample Slide

# Harnessing the power of space.

UMBRA

A bold opening layout used to introduce key messages, ideas, or presentations. Ideal for starting decks or major thematic shifts.



UMBRA

# Space Systems

Flight-proven  
components.

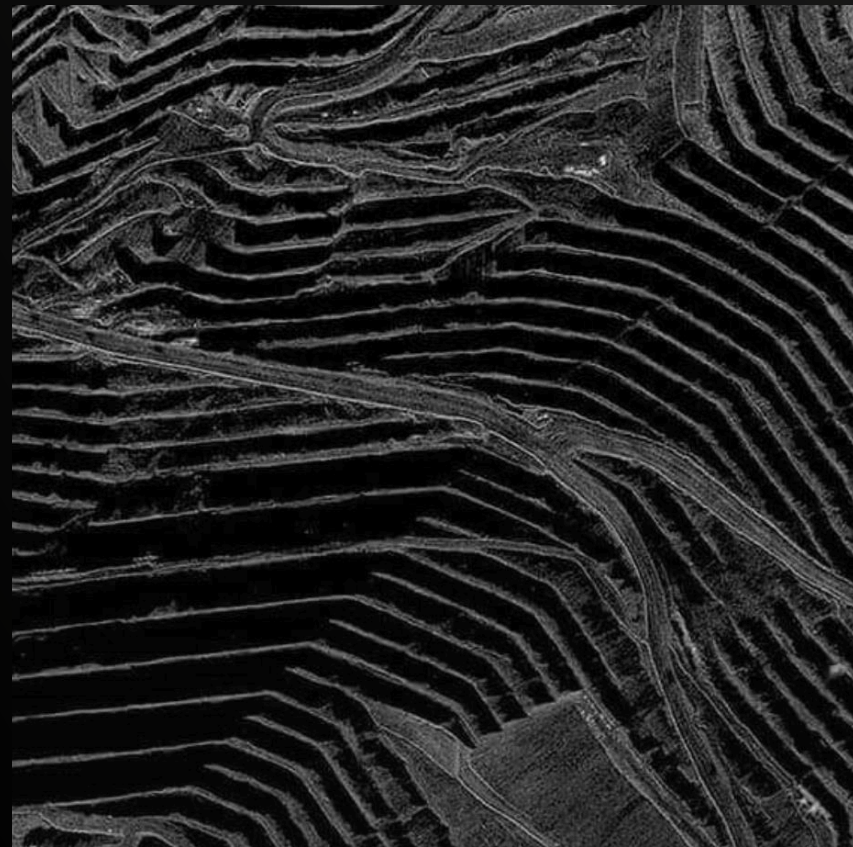


Used to introduce a new topic or section within a deck. The subhead allows for brief context or a supporting message to guide the viewer.



UMBRA

# Remote Sensing



1

## The Data

The highest-volume, all-weather SAR — fast, reliable, and ready on-demand

A layout designed to separate content sections while offering a brief explanation or summary. Useful for transitions that require a little more context.



Your Mission.

UMBRA

Our Obsession.

A variation on the headline page that offers a different composition—ideal for visual rhythm and pacing across longer decks.



Mission Solutions

# The Deployment

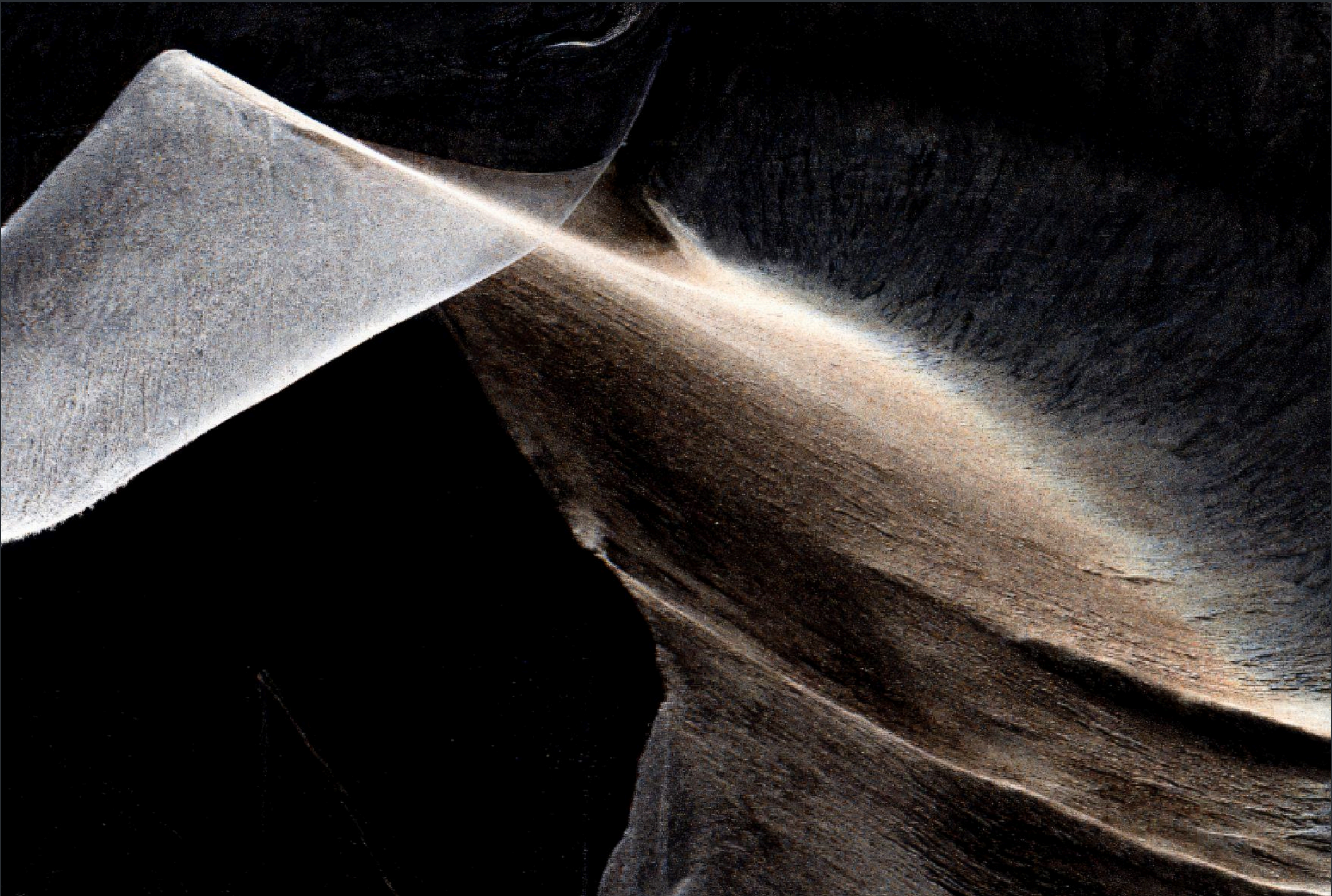


- Ground Systems
- Spacecraft
- **Payloads**
- Mission System Engineering

Complete satellite missions, powered by our space systems, tailored to meet your unique needs

Highlights the current section within a multi-part presentation. Use this to give viewers a sense of structure and orientation.





## Remote Sensing

Delivering high-quality data to commercial and government organizations

## Space Systems

Providing off-the-shelf commodities, hardware and software created from vertical integration

## Mission Solutions

Delivering built-for-mission capabilities & custom satellite systems leveraging our expertise of IP and engineering

Best for summarizing key takeaways or outlining simple frameworks. Each point includes space for a supporting line of context.



Remote Sensing

01

02

03

04

05

Quality

Volume

Speed

Reliability

Value

Ideal for listing out concise information such as steps, features, or key messages. Designed for clarity and quick scanning.



# Sample Slide



Designed. Built.  
Operated.

We build it. We fly it. And we apply  
everything we learn to what comes next.

A visually impactful slide where the image takes center stage. Use this layout when a strong visual can support the main message or emotional tone.



Our  
Locations

Umbra  
West

SANTA BARBARA, CA

Umbra  
East

ARLINGTON, VA

Great for comparisons, before/after views, or showcasing different locations or perspectives. Each image has room for a short label or caption.



# Digital







# Print





UMBRA

**Joe Morrison**

General Manager and Vice President,  
Remote Sensing

+1 805-708-2416  
joe.morrison@umbra.space  
www.umbra.space



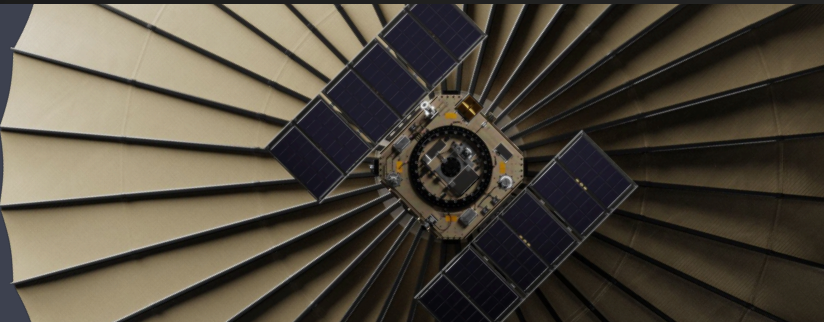
UMBRA



# Press Release

UMBRA

PRESS RELEASE :  
AUGUST 5, 2025



DRAFT

## DARPA selects Umbra to demonstrate radar imaging techniques

The agency will experiment with imaging capabilities enabled by at least two SAR satellites flown in formation

Santa Barbara, CA — August 5, 2025

ST. LOUIS — Umbra won a contract from the Defense Advanced Research Projects Agency to demonstrate novel collection techniques using synthetic aperture radar satellites, the company announced May 22.

DARPA, the Pentagon's research and development arm, awarded Umbra a cost-sharing agreement under a new program called Digital Radar Image Formation Technology (DRIFT). The agency allocated \$4.5 million for the one-year project.

Umbra, a startup based in Santa Barbara, California, operates a constellation of six high-resolution SAR satellites, and is scheduled to launch two more later this year on the SpaceX Transporter 9 rideshare mission.

U.S. government interest in commercial SAR imaging has grown significantly over the past year, Todd Master, Umbra's chief operating officer, told SpaceNews.

The DRIFT program seeks to demonstrate advanced imaging capabilities enabled by at least two SAR satellites flown in formation. DARPA last year also awarded contracts to Jacobs, Northrop Grumman and PredaSAR.

Radar imaging emerged as a breakout remote-sensing capability of the war in Ukraine where optical satellites are impaired by dense cloud cover and weather conditions.

Umbra under the DARPA contract will demonstrate a technique known as bistatic collection. Monostatic SAR imaging is done with a single radar that has the transmitter and receiver collocated. Bistatic imaging uses two radars, one that transmits and receives, and the other that only receives.

"We plan to build out the remainder of our constellation with pairs of satellites flying in tight formation to support bistatic collection and other combined operations that provide unique phenomenology," he said.

Umbra was licensed to deploy 32 satellites.

### ABOUT UMBRA

Umbra is an American space technology company delivering advanced systems — from sensors to spacecraft — that empower customers worldwide with unmatched access to high-resolution radar data from space. Operating the most capable Synthetic Aperture Radar (SAR) constellation on the market, Umbra provides precision imagery in any condition, at any time. With a commitment to First Principles engineering, end-to-end system ownership, and rapid satellite customization, Umbra supports critical missions that deliver information advantages — redefining what's possible in and through space. Umbra is founded and operated in the United States with facilities in Santa Barbara, Calif., and Arlington, VA.

### MEDIA CONTACTS

press@umbra.space



UMBRA

INTERNAL MEMO

Title	[Title]
Author	[Name of author]
To	[Name of person or team]
Date	August 5, 2025
Distribution	Do not disclose except in accordance with Umbra's Document Control Policy.
Export Control Statement	<div>[ If memo contains export-controlled information, select the following: WARNING — This document contains technical data whose export is restricted by the Arms Export Control Act (Title 22, U.S.X., Sec 2751, et seq.) or the Export Administration Act of 1979, as amended, Title 50, U.S.C., App. 2401 et seq. Violations of the export laws are subject to severe criminal penalties.  If memo does not contain export-controlled information, select the following: None. ]</div>

[Note to draft - select appropriate document classification and markings per Umbra Document Control Policy.]



01	Umbra Public
02	Umbra Confidential
03	Umbra Restricted   Proprietary
04	Umbra Restricted   Proprietary   Export Controlled

# Disclosures



# Umbra Public

Publicly Distributed Material

DISTRIBUTION STATEMENT

Restrictions on Use, Publication or Disclosure. None.

EXPORT CONTROL STATEMENT

This document contains no United States Export Control data. Umbra is committed to compliance with all United States export control policies and regulations, including, but not limited to, the Arms Export Control Act (Title 22, U.S.C., Sec 2751, et seq.) and the Export Control Reform Act of 2018 (Title 50, U.S.C., Chapter 58, Sec. 4801-4852). Violations of U.S. Export Control laws and regulations are subject to civil and criminal penalties.



# Umbra Confidential

## Confidential But NOT Export Controlled

**DISTRIBUTION STATEMENT**

Restrictions on Use, Publication or Disclosure. For Internal Use Only. This document may not be used or disseminated outside of Umbra Lab Inc., without prior written authorization.

**EXPORT CONTROL STATEMENT**

This document contains no United States Export Control data. Umbra is committed to compliance with all United States export control policies and regulations, including, but not limited to, the Arms Export Control Act (Title 22, U.S.C., Sec 2751, et seq.) and the Export Control Reform Act of 2018 (Title 50, U.S.C., Chapter 58, Sec. 4801-4852). Violations of U.S. Export Control laws and regulations are subject to civil and criminal penalties.



# Umbra Restricted | Proprietary

For PROPRIETARY But NOT Export Controlled

DISTRIBUTION STATEMENT

Restrictions on Use, Publication or Disclosure. This document includes data that is intended for use by recipient’s organization. Any other use or disclosure shall be made only with the prior consent of Umbra Lab, Inc. All data within this document is subject to this restriction.

EXPORT CONTROL STATEMENT

This document contains no United States Export Control data. Umbra is committed to compliance with all United States export control policies and regulations, including, but not limited to, the Arms Export Control Act (Title 22, U.S.C., Sec 2751, et seq.) and the Export Control Reform Act of 2018 (Title 50, U.S.C., Chapter 58, Sec. 4801-4852). Violations of U.S. Export Control laws and regulations are subject to civil and criminal penalties.



# Umbra Restricted | Proprietary | Export Controlled

For Export Controlled Material

DISTRIBUTION STATEMENT

Restrictions on Use, Publication or Disclosure. This document includes data that is intended for use by recipient’s organization. Any other use or disclosure shall be made only with the prior consent of Umbra Lab, Inc. All data within this document is subject to this restriction.

EXPORT CONTROL STATEMENT

**WARNING.** This document contains technical data whose export is restricted by the Arms Export Control Act (Title 22, U.S.C., Sec 2751, et seq.), (AECA) or the Export Control Reform Act of 2018 (Title 50, U.S.C., Chapter 58, Sec. 4801-4852) (ECRA). Transfer of this data by any means to a Non-U.S. Person, whether in the United States or abroad without the proper U.S. government authorization is strictly prohibited. Violations may be subject to both criminal and administrative penalties under the Arms Export Control Act of 1976 (as amended).



# Umbra Restricted | Proprietary | Export Controlled

## Special Distribution

DISTRIBUTION STATEMENT

Restrictions on Use, Publication or Disclosure. [Insert appropriate text here]

EXPORT CONTROL STATEMENT

**WARNING.** This document contains technical data whose export is restricted by the Arms Export Control Act (Title 22, U.S.C., Sec 2751, et seq.), (AECA) or the Export Control Reform Act of 2018 (Title 50, U.S.C., Chapter 58, Sec. 4801-4852) (ECRA). Transfer of this data by any means to a Non-U.S. Person, whether in the United States or abroad without the proper U.S. government authorization is strictly prohibited. A violations may be subject to both criminal and administrative penalties under the Arms Export Control Act of 1976 (as amended).



UMBRA